

2017 Mazda6



mazda

DRIVING MATTERS®

ZOOM-ZOOM

DOES DRIVING MATTER?

Does a long, winding road or an empty freeway
on Sunday morning matter if the car you're in
doesn't take advantage of the moment?

Does safety, technology, efficiency or even beauty matter,
if a car doesn't feel right in your hands?

If you build Mazdas, driving is what matters most.

That's why everything we do makes driving better.

Like safety technology that inspires confidence.

Engine technology that makes our cars and SUVs
more fuel-efficient. Yet still responsive.

And designs that capture motion,
even when the car isn't moving.

What's better than a great driving car?

A car company that won't build anything less.

MAZDA. DRIVING MATTERS®



DESIGNED TO TURN HEADS.





ENGINEERED TO CHANGE MINDS.

The design of the Mazda6 presented a significant challenge. When a car is designed to be beautiful, performance is often diminished. Our engineers saw this as a challenge to turn an esthetically stunning design into something truly functional. With aerodynamics better than a Lamborghini Aventador and a body design that contributes to both high-speed stability and fuel efficiency, the Mazda6 is a living, driving embodiment of perseverance.

>

THE BIRTH OF SOUL

To create Soul Red Metallic, we put a three-coat painting process into action. The result is absolutely unlike any other red on the road—a deep and vivid hue that appears to emanate from within. By layering two separate coats of high-brightness aluminum flakes with a high-chroma red pigment, it is nothing less than an audacious reinvention of the painting process.

THE NEW 2017 MAZDA6.



WE BUILD EVERY MAZDA WITH ONE INTENTION:

TO CREATE A SEAMLESS CONNECTION BETWEEN YOU,
YOUR VEHICLE AND THE ROAD. IT'S WHAT WE CALL *JINBA ITTAI*,
WHICH TRANSLATES TO "RIDER AND HORSE AS ONE."

IT'S THE ESSENCE OF WHY DRIVING MATTERS.





MORE REFINED THAN EVER.

Even in a vehicle as sophisticated as the Mazda6, we found unique ways to elevate the design. New for 2017, we added the available Grand Touring Premium Package. Inside, subtle details like ambient overhead console lighting and Nappa leather interior trim add a luxurious touch. Enjoy a heated leather-wrapped steering wheel with a new distinctive stitch pattern. The Premium Package also offers a choice between Black or Parchment Nappa leather-trimmed seats that include heated front and rear seats. There are even subtle refinements you can't see, but enhance performance. Like our Active Grille Shutters that improve fuel efficiency by reducing aerodynamic drag, and the i-ELOOP regenerative engine braking system that improves efficiency in stop-and-go city driving. All the high-end details that make driving better.

THE DEEPEST BOND IN THE SHORTEST DISTANCE.

At the heart of our passion for driving is a desire to create an immediate and undeniable connection between driver and vehicle. It's something we call the 100-Meter Promise—our belief that you should feel connected to your car within the first 100 meters of driving. To achieve this, we designed every aspect of Mazda6 acceleration, deceleration and steering to work in harmony to unite car and driver. In no time at all. Both the accelerator pedal and steering wheel feel uniquely linear and natural. Smooth transitions in g-forces were dialed into the braking system as well—making the Mazda6's controllability simply exceptional. The relationship between man and machine has never felt so natural. Or so exhilarating.



◀ SHIFTING GEARS

For an even more performance-oriented experience, select Mazda6 models offer Sport Mode. This feature allows you to hold gears longer. Giving you more control when driving in challenging conditions, like curvy mountain roads.



EXCELLENT
PERFORMANCE.
IMPRESSIVE
EFFICIENCY.

At Mazda, creating a better driving experience is our first priority. That means we would never design a vehicle that sacrifices performance for fuel efficiency. Instead, we did the impossible and enhanced both. Our groundbreaking SKYACTIV® TECHNOLOGY is a holistic system of innovations that takes the entire car into consideration—from the Mazda6's body construction and engine technology to its chassis and transmission—to improve the overall driving experience. Power and performance are delivered in abundance. Along with efficiencies that allow the Mazda6 to offer up to an EPA-estimated 35 highway MPG.¹

UP TO AN EPA-ESTIMATED
35 HWY
MPG¹

SKYACTIV® TECHNOLOGY

THE PISTON REIMAGINED
Just one of many proprietary SKYACTIV® TECHNOLOGY innovations throughout the Mazda6 that enhance performance and help it achieve excellent fuel efficiency. By completely redesigning the piston and fuel distribution system, we were able to build a more efficient combustion engine with an incredible 13:1 combustion ratio, similar to sports cars.

Want to know more about the benefits of SKYACTIV TECHNOLOGY? Visit MazdaUSA.com/skyactiv

¹Based on EPA estimates for 2017 Mazda6 models with automatic transmission, 26 city/35 highway MPG. Actual results will vary.

MORE CONNECTED IN THE CURVES.

Mazda never stops innovating. In our endless quest to make the driving dynamics of our vehicles better, our engineers pioneered an all-new technology called SKYACTIV-VEHICLE DYNAMICS with G-Vectoring Control. Working behind the scenes, it helps achieve a smoother, less fatiguing drive for you and your passengers by subtly adjusting engine torque and shifting vehicle weight during spirited drives. The result is steering that is more precise and a ride that is less jarring for drivers and passengers alike. Some of the credit also goes to Electric Power Assist Steering. With a quick steering ratio, it offers a brisk response that lets the driver enjoy both twisty roads and challenging urban conditions. Why do we obsess over subtle improvements? Because we believe that by perfecting even the smallest of details, we can make driving better.



"G-VECTORING CONTROL IS JUST
ANOTHER SMALL STEP ON MAZDA'S
MARCH TOWARD HANDLING PERFECTION."

—RoadandTrack.com, June 2016

AN EYE FOR DESIGN. AND SAFETY.

KODO-design headlamps play an important role in both Mazda style language and as a safety feature. Grand Touring models feature a design that incorporates light-emitting diodes (LEDs) and a light-guiding ring. Also available is High Beam Control technology that helps the driver see better at night by maximizing opportunities to use the high beams. Besides creating a dramatic impression, the eye-catching design provides daytime running light to other motorists. Also standard on Grand Touring models is an Adaptive Front-lighting System that automatically adjusts the angle of the LED headlights according to the steering angle and vehicle speed. When cornering or turning through intersections at night, the headlights' beams illuminate the path the car will actually follow, enhancing driver safety.



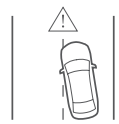
A 2016 IIHS TOP SAFETY PICK+

(When equipped with available Smart City Brake Support⁴)



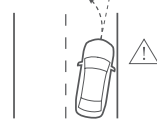
i-ACTIVSENSE®

A thoroughly original way to think about safety technology, the available i-ACTIVSENSE® system was designed to provide you all the information you need to make smart decisions behind the wheel. This active safety approach helps to sense what the driver cannot easily anticipate, making you aware of potential hazards to help you avoid collisions. It's all part of our belief that by extending your sensory awareness, we can provide peace of mind for a more enjoyable drive.



LANE DEPARTURE WARNING SYSTEM¹

When traveling at speeds of 37 mph or higher, available Lane Departure Warning System gives you audible and visual warnings when it detects that your vehicle is about to unintentionally depart from its lane.



LANE-KEEP ASSIST²

Available Lane-keep Assist adds to the warnings of the Lane Departure Warning System. When it senses a potential unintentional lane departure, it will perform minor steering corrections to help guide your vehicle back to the center of the lane.



ADVANCED BLIND SPOT MONITORING³

Available Advanced Blind Spot Monitoring helps detect objects in your blind spots and alerts you with a chime and warning light in the side mirror. It also detects and warns you of fast-approaching vehicles that may enter a blind spot.



REAR CROSS TRAFFIC ALERT³

When backing up, available Rear Cross Traffic Alert helps detect a vehicle approaching from the side and promptly alerts the driver with an audible warning, as well as a visual warning in either side mirror and the display screen.



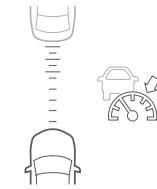
SMART CITY BRAKE SUPPORT⁴

When traveling at speeds between about 2 and 18 mph, available Smart City Brake Support helps detect objects ahead and prepares your vehicle by adjusting brake pads closer to the disc. If no action is taken, the brakes are automatically applied.



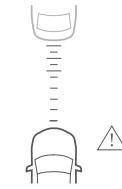
SMART BRAKE SUPPORT⁵

When traveling at speeds above 10 mph, available Smart Brake Support helps detect objects ahead and warns you when braking is immediately necessary. If no driver action is taken, the system automatically applies the brakes.



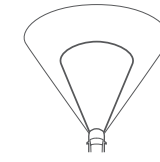
MAZDA RADAR CRUISE CONTROL⁶

This available system judges the relative speed and distance to the vehicle ahead and works within a set speed range to help maintain a safe following distance. Warnings alert you if the system senses your vehicle is fast approaching the one ahead.



DISTANCE RECOGNITION SUPPORT SYSTEM⁷

At speeds above 19 mph, this available technology measures the distance between your vehicle and the vehicle ahead and recommends a comfortable following distance. If your vehicle encroaches on this distance, a warning light illuminates.



HIGH BEAM CONTROL

Available High Beam Control helps the driver see better at night by maximizing opportunities to use the high beams. The system automatically switches to low beams when it detects oncoming traffic and/or a vehicle ahead.



TRAFFIC SIGN RECOGNITION SYSTEM⁸

Using a front-mounted camera, this technology can actually read select road signs such as the Speed Limit, Stop and Do Not Enter. This information then shows up in the Active Driving Display so you can stay alert and informed without taking your eyes off the road.

¹Lane Departure Warning System is not a substitute for safe and attentive driving. There are limitations to the range and detection of the system. Please see your Owner's Manual for further details. ²Lane-keep Assist is not a substitute for safe and attentive driving. There are limitations to the range and detection of the system. Please see your Owner's Manual for further details. ³Always check your mirrors. Be aware of the traffic around you. There are limitations to the range and detection of the systems. Please see your Owner's Manual for further details. ⁴Smart City Brake Support operates under certain low-speed conditions between about 2 and 18 mph. It is not a substitute for safe and attentive driving. Factors including movement and shape of the object in front of the vehicle, weather and road conditions can all impact automatic stopping.

⁵Smart Brake Support operates under certain conditions above 10 mph. It is not a substitute for safe and attentive driving. Factors including movement and shape of the object in front of the vehicle, weather and road conditions can all impact automatic brake control and collision warning. ⁶Mazda Radar Cruise Control is not a substitute for safe and attentive driving. There are limitations to the range and detection of the system. Please see your Owner's Manual for further details. ⁷Distance Recognition Support System is not a substitute for safe and attentive driving. There are limitations to the range and detection of the system. Please see your Owner's Manual for further details. ⁸Traffic Sign Recognition System is not a substitute for safe and attentive driving. Factors including weather and the condition of the traffic sign can all impact recognition or display of the sign. Always check the traffic signs visually while driving. There are limitations to the range and detection of the system. Please see your Owner's Manual for further details.



AN INSIDE LOOK AT THE FINER POINTS.

Inside the Mazda6, you'll find more dramatic expressions of our KODO design sensibility. Richly appointed with premium materials, Grand Touring models offer an enhanced cabin designed to envelop you in sporty refinement, including leather-trimmed seats, a power driver's seat with memory, and a refined dashboard and instrument panel. Design-wise, the Mazda6's clever A-pillar helps make getting in and out of the car easy. The lightweight seat structure increases the overall rigidity and comfort of the front seats. By making the seat perforations moderately large and the distances between them small, our engineers created upholstery that's not only soft and breathable, but absorbs road sounds for an enhanced audio-listening environment.

UNLOCK A PERFECT UNION BETWEEN DRIVER AND MACHINE.

To enter the Mazda6 is to access an energetic, artistic environment where the driver can relax and completely focus on the road ahead. Everything the driver sees, touches and operates is designed to heighten the driving experience. Inside, tapered forms evoke a sense of speed that mimics the energy of the Mazda6's exterior design. Just opening the near-perfectly balanced door brings to mind the same feelings you'll have while seated behind the wheel. There's even the available full-color Active Driving Display that helps you take your mind off distractions by projecting critical information directly in the driver's field of view and above the gauge cluster, allowing you to process information faster by keeping your eyes focused on the road ahead.



Mazda6 Grand Touring interior shown in Parchment leather

IN THE SPACIOUS MAZDA6, COMFORT NEVER TAKES A BACK SEAT.

Even in a driver's car, special attention is paid to the comfort of rear-seat passengers. Conveniences await, from climate control vents and one-liter bottle holders, to scalloped front seatbacks for more knee room. And with plenty of space between the front seat mounts, it's easier for those in the back to flex their feet. Getting out of the Mazda6 is easy, too, thanks to generous passenger head clearance and a wider center armrest in the rear seat that accommodates elbows comfortably.

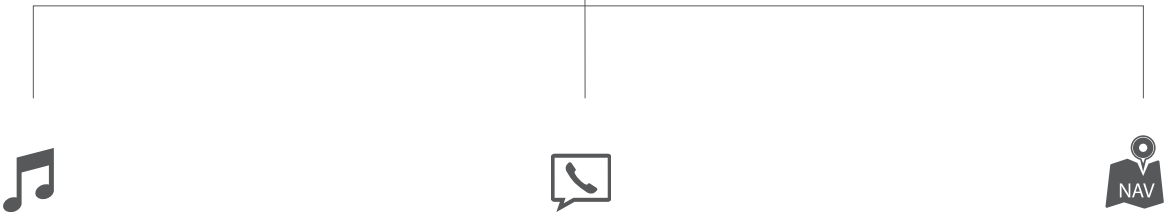




COMPLETELY CONNECTED. EFFORTLESSLY ENGAGING.

When driving is in your DNA, you build cars that go the distance. That's the thinking behind our available MAZDA CONNECT™ infotainment system. Explore the possibilities, including internet radio app compatibility, hands-free telephone, an available navigation system, and so much more. Everything is easily controlled using the convenient multifunction Commander control, and viewable on the full-color 7-inch display.

MAZDA CONNECT™ is your window to the world amid the distractions of the road.



ENTERTAIN

With Bluetooth® connectivity and the Aha™ Internet radio app, you can connect to your Facebook and Twitter feeds or thousands of other streaming content offerings. Enjoy integrated internet radio apps such as Pandora® and Stitcher™, or simply select from your own playlist.

COMMUNICATE

Thanks to Bluetooth® hands-free phone and audio streaming, you can easily pair your compatible mobile phone to make and receive calls. And SMS Text Message Audio Delivery and Reply allows you to enjoy fully integrated text display and audible readout.

NAVIGATE

Our convenient available factory-integrated Mazda Navigation System offers the advanced features of today's navigation devices, including voice command and advanced lane guidance. And getting around town is easier, thanks to the system's 3D interactive map with step-by-step audio directions.



*Don't drive while distracted. Even with voice commands, only use MAZDA CONNECT™ / other devices when safe. Some features may be locked out while the vehicle is in motion. Not all features are compatible with all phones. Message and data rates may apply.

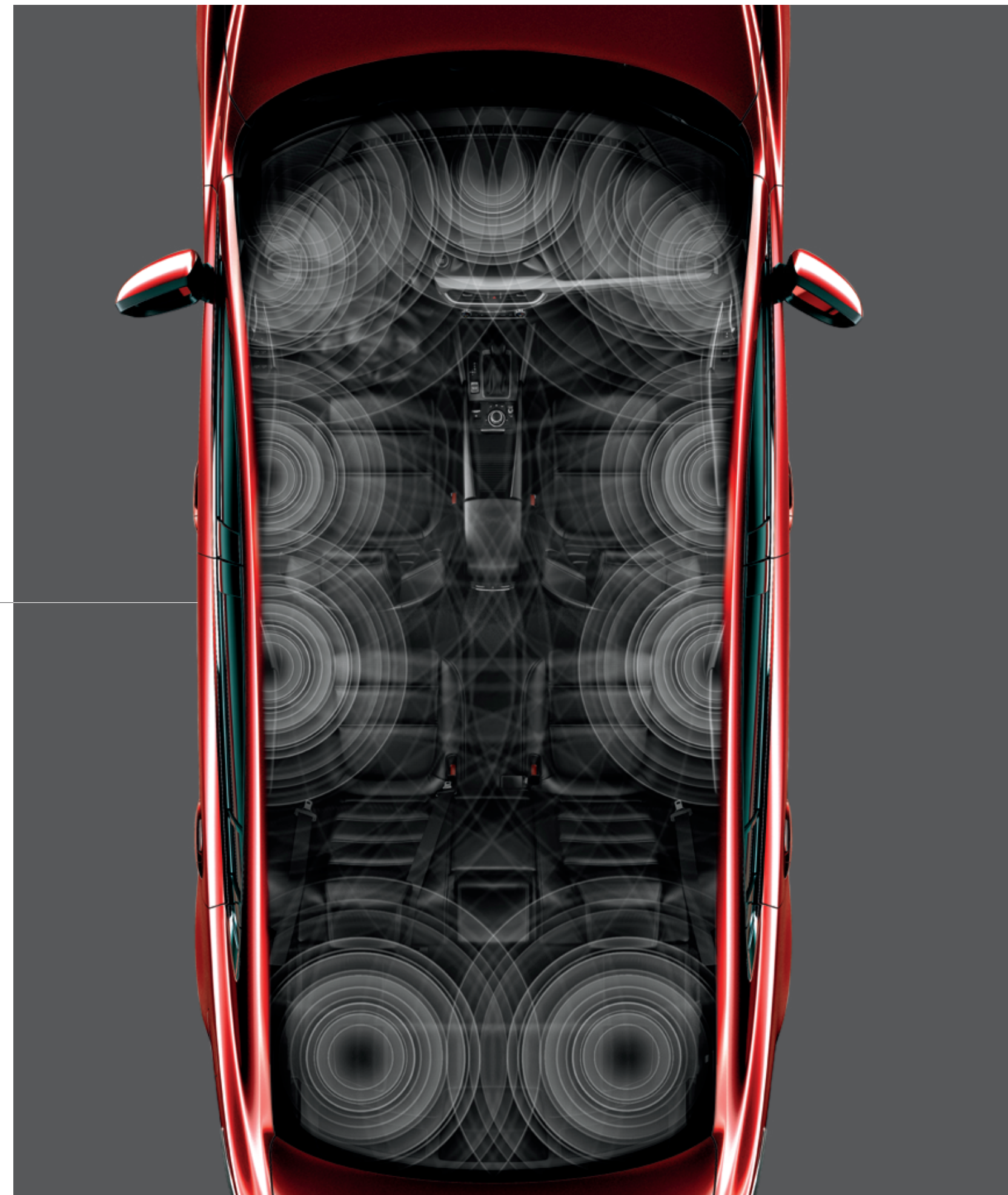
IN TUNE WITH YOU IN EVERY SENSE.

We believe a connected driving experience should even include your sense of hearing. That's why for the Mazda6, we opted for nothing less than an available 11-speaker Bose® Centerpoint® 2 Surround Sound System. This highly advanced system uses a proprietary Bose® algorithm that analyzes stereo recordings, steering vocals and instruments to the front soundstage and even ambient sound to create a stunning surround experience. Get ready to hear sound quality that matches the exhilaration you'll feel while driving, from almost any source, such as CDs, MP3 devices and radio broadcasts, including available SiriusXM Satellite Radio!



SOUND TUNEUP

Even in a car as quiet as the Mazda6, unwanted ambient noise can interfere with your enjoyment of music. Bose® AudioPilot® 2 noise compensation technology preserves premium listening conditions, even as background noise levels change, providing occupants with a consistent and uninterrupted listening experience.



WHEN WE RACE, YOU WIN.

Since 1968, Mazda has consistently competed and won titles in endurance racing, the most challenging form of motorsports. Far more than simply being fast and nimble, our advantage is our durability and reliability. It's how we made automotive history in 1991, becoming the first—and only—Asian automaker to win the 24 Hours of Le Mans. This stunning upset was accomplished by outperforming the competition with our very own reliable rotary engine. It's also how we produced 23 class wins at the Rolex 24 At Daytona. And why, on any given weekend, more Mazdas and Mazda-powered cars are road-raced in the United States than any other brand! Because Driving Matters to Mazda, we race almost everything we build—so ultimately, you win.



A 2016 EDITORS' CHOICE: FAMILY SEDAN

-CarandDriver.com



MAZDA6 COLORS



Soul Red Metallic¹



Jet Black Mica



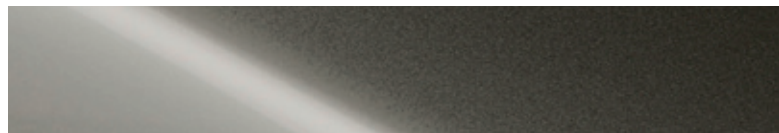
Blue Reflex Mica



Deep Crystal Blue Mica



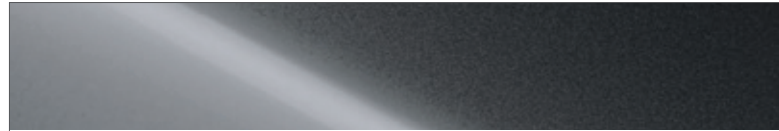
Sonic Silver Metallic



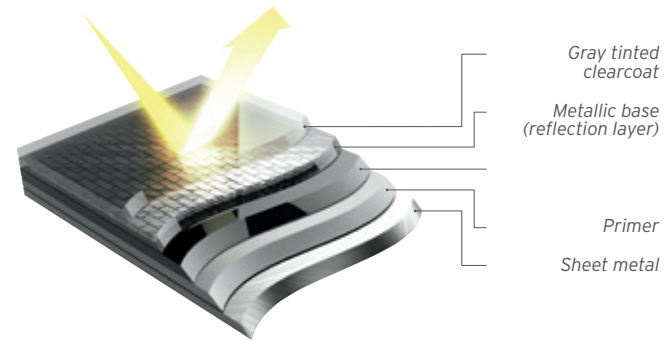
Titanium Flash Mica



Snowflake White Pearl Mica²



Machine Gray Metallic¹

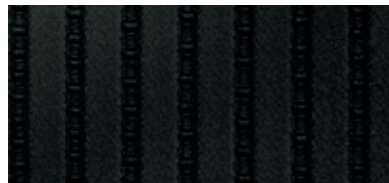


EVEN THE PAINT IS INNOVATIVE.

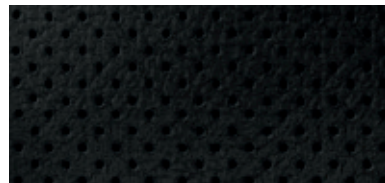
Machine Gray Metallic: This new signature paint from Mazda offers the luster and depth reserved for concept vehicles. Conceived by the creative minds of our designers, this rich hue is the result of a myriad of spray processing innovations. Aluminum paint flakes align in a uniform pattern that parallels the surface of the Mazda6's body panels for dramatic hues with intense luminosity and a reflective, liquid-like quality.

MAZDA6 UPHOLSTERY

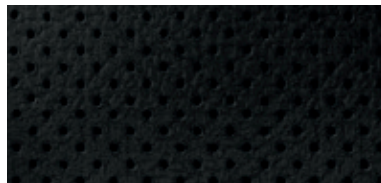
BLACK CLOTH



BLACK LEATHERETTE



BLACK LEATHER WITH ESPRESSO TRIM



BLACK NAPPA LEATHER



SAND CLOTH



SAND LEATHERETTE



PARCHMENT LEATHER



PARCHMENT NAPPA LEATHER



MAZDA6 WHEELS



17-inch Alloy



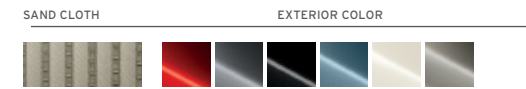
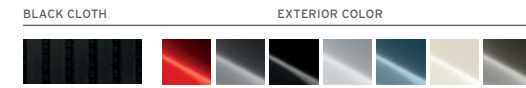
19-inch Alloy



19-inch Alloy with Dark Silver finish



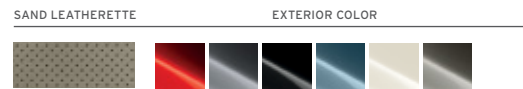
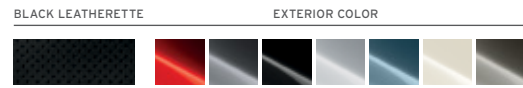
MAZDA6 SPORT



Includes the following features:

- 184-hp 2.5L SKYACTIV®-G DOHC 16-valve 4-cylinder engine with VVT
- Standard SKYACTIV-MT 6-speed manual transmission, available SKYACTIV-Drive 6-speed Sport automatic transmission with manual-shift and Sport modes
- 17-inch alloy wheels
- Halogen headlights with auto off and daytime running lights
- LED combination taillights
- Variable-intermittent windshield wipers
- Dual power side mirrors with integrated turn signal indicators
- Air conditioning with pollen filter
- Power windows with one-touch down/up feature on all windows
- Power door locks
- Cruise control
- AM/FM/CD/MP3-compatible audio system with 6 speakers
- MAZDA CONNECT™ Infotainment System
- 7.0" full-color touch-screen display
- Multifunction Commander control
- HD Radio™
- Infotainment system with voice command
- Aha™
- Pandora®
- Stitcher™ internet radio integration
- Radio data system program information
- SMS text message audio delivery and reply
- Rearview camera³
- 6-way manually adjustable driver's seat with manual lumbar support
- Remote keyless entry
- Push Button Start
- Tilt and telescopic steering column
- Electronic parking brake
- 60/40 split fold-down rear seatback
- Bluetooth® hands-free phone and audio streaming
- Auxiliary-audio input jack and USB audio input port
- Steering wheel-mounted audio and cruise controls
- Advanced front air bags, front side-impact air bags and side-impact air curtains⁴
- Dynamic Stability Control (DSC)⁵ & Traction Control System (TCS)

MAZDA6 TOURING



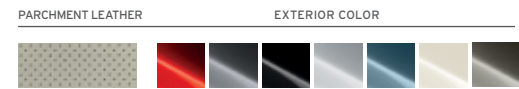
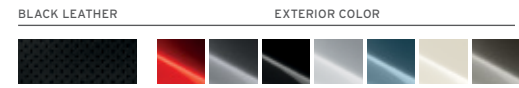
Includes the following features in addition to or in place of Mazda6 Sport:

- 19-inch alloy wheels
- Rain-sensing windshield wipers
- Auto on/off headlights
- Dual-zone automatic climate control
- Mazda Advanced Keyless Entry System
- 6-way power-adjustable driver's seat
- Rear A/C vents
- Leatherette-trimmed seats
- Illuminated driver and front passenger vanity mirrors
- Advanced Blind Spot Monitoring⁶
- Rear Cross Traffic Alert⁶
- Smart City Brake Support⁷

Available Premium Package includes auto on/off LED headlights with Adaptive Front-lighting system, LED daytime running lights, heated front seats, auto-dimming rearview mirror with HomeLink®, auto-dimming driver's-side mirror and heated side mirrors

Available Moonroof Package includes power sliding-glass moonroof, Bose® Centerpoint® 2 Surround Sound audio system with 11 speakers, SiriusXM Satellite Radio with 4-month trial subscription to the SiriusXM All Access package⁸

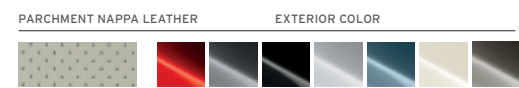
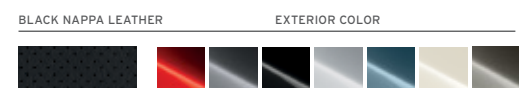
MAZDA6 GRAND TOURING



Includes the following features in addition to or in place of Mazda6 Touring:

- Standard SKYACTIV-Drive 6-speed Sport automatic transmission with manual shift and Sport modes
- Power sliding-glass moonroof
- 19-inch alloy wheels with Dark Silver finish
- Rear lip spoiler
- LED headlights with Adaptive Front-lighting System
- LED fog lights
- LED daytime running lights
- LED grille lighting accent
- Heated side mirrors
- Auto-dimming driver's-side mirror
- Full-color Active Driving Display
- Steering-wheel-mounted paddle shifters
- Navigation system
- Heated front seats
- Leather-trimmed seats
- 8-way power-adjustable driver's seat with power lumbar adjustment and memory settings
- 6-way power-adjustable passenger seat
- Bose® Centerpoint® 2 Surround Sound audio system with 11 speakers
- SiriusXM Satellite Radio with 4-month trial subscription to the SiriusXM All Access package⁸
- Smart Brake Support⁹
- Mazda Radar Cruise Control¹⁰
- Distance Recognition Support System¹⁰
- Lane Departure Warning System¹⁰
- Lane-keep Assist¹⁰
- High Beam Control
- Traffic Sign Recognition System¹¹

Available Premium Package includes i-ELOOP regenerative engine braking system, Nappa leather-trimmed seats, heated rear seats, heated leather-wrapped steering wheel with unique stitching, black headliner, overhead console ambient lighting, bright finish on seating controls and glove box handle, door sash tape, and active grille shutters



MAZDA6 SPECIFICATIONS & CAPACITIES

ENGINE	
Engine size and type	2.5L DOHC 16-valve 4-cylinder with variable valve timing
Horsepower, SAE net	184 @ 5,700 rpm
Torque, SAE net (lb-ft)	185 @ 3,250 rpm
Redline	6,500 rpm
Compression ratio	13.0:1
Fuel injection	Direct fuel injection
Fuel	Regular unleaded gasoline
Body type	SKYACTIV®-Body with Ring Structure
EPA-estimated fuel economy ¹²	(MPG, city/hwy)
Manual	24 / 34
Automatic	26 / 35 (27 / 35 with Premium Package)
Curb weights (lb)	
Manual	3,240
Automatic	3,305

EXTERIOR DIMENSIONS	
Wheelbase/overall length (in)	111.4 / 191.5
Overall width/overall height (in)	72.4 / 57.1
Track, front/rear (in)	62.4 / 62.0 (Sport)
Track, front/rear (in)	62.8 / 62.4 (Touring, Grand Touring)
Turning circle, curb-to-curb (ft)	36.7

INTERIOR DIMENSIONS		FRONT/REAR	
Headroom (in)	38.4 / 37.1		
Headroom, with moonroof (in)	37.4 / 37.1		
Legroom (in)	42.2 / 38.7		
Shoulder room (in)	57.1 / 55.5		
Hip room (in)	56.1 / 56.1		

CAPACITIES	
EPA passenger volume (cu ft)	99.7
EPA cargo volume (cu ft)	14.8
Fuel capacity (U.S. gallons)	16.4

MAZDA6 ENGINE & MECHANICAL

ENGINE & TRANSMISSION

- SKYACTIV-G 2.5L DOHC 16-valve 4-cylinder engine
- SKYACTIV-MT 6-speed manual overdrive transmission
- SKYACTIV-Drive 6-speed Sport automatic transmission
- Sport Mode (AT models)

SUSPENSION & BRAKES

- MacPherson strut front suspension with stabilizer bar
- E-type multilink rear suspension with stabilizer bar
- Engine-speed-sensing variable, Electric Power Assist Steering
- Power-assisted 4-wheel disc brakes
- Anti-lock Brake System with Electronic Brakeforce Distribution
- Brake Assist
- Dynamic Stability Control⁵
- Traction Control System

TIRES & WHEELS

- 17-inch alloy wheels with P225/55 R17 all-season tires (Sport)
- 19-inch alloy wheels with P225/45 R19 all-season tires (Touring)
- 19-inch alloy wheels with Dark Silver finish and P225/45 R19 all-season tires (Grand Touring)

WE'RE COMMITTED TO OUR DRIVERS.



MAZDA EXTENDED CONFIDENCE

Every new 2017 Mazda6 is protected by a:

- 3-year/36,000-mile¹ New Vehicle Limited Warranty
- 3-year/36,000-mile¹ 24/7 Emergency Roadside Assistance Program
- 5-year/60,000-mile¹ Limited Powertrain Warranty
- 5-year/unlimited-mileage Warranty Against Body Rust-Through (Anti-Perforation Limited Warranty)

¹Whichever comes first.

FINANCING WITHOUT THE FUSS.



MAZDA CAPITAL SERVICES

Whether you're buying or leasing a new Mazda, Certified Pre-Owned Mazda or a used vehicle, Mazda Capital Services² can help make the financing process more convenient and satisfying. One of the largest auto lenders in America, Mazda Capital Services is known for first-class customer service, a wide range of financing options and highly competitive rates.

To find out which purchase or lease plan is right for you, talk with your Mazda Dealer or visit MazdaUSA.com.

²The tradename "Mazda Capital Services," as well as the Mazda and Mazda Capital Services logos, are owned by Mazda Motor Corporation or its affiliates and are licensed to JPMorgan Chase Bank, N.A. ("Chase"). Retail/loan and lease accounts are owned by Chase.

FOR DETAILS, PLEASE SEE YOUR MAZDA DEALER, VISIT MAZDAUSA.COM OR CALL TOLL-FREE (800) 639-1000.

³Extra cost option. ⁴Don't drive while distracted. Even with voice commands, use only MAZDA CONNECT™/other devices when safe. Some features may be locked out while the vehicle is in motion. Not all features are compatible with all phones. Message and data rates may apply. ⁵Rearview camera does not provide a comprehensive view of the entire rear area of this vehicle. Always check your surroundings. ⁶Always wear your seat belt and secure children in the rear seats in appropriate child restraints. ⁷Dynamic Stability Control (DSC) is an electronic system designed to help the driver maintain control under adverse conditions. It is not a substitute for safe driving practices. Factors including speed, road conditions and driver steering input can all affect whether DSC will be effective in preventing loss of control. Please see your Owner's Manual for further details. ⁸Always check your mirrors. Be aware of the traffic around you. There are limitations to the range and detection of the systems. Please see your Owner's Manual for further details. ⁹Smart City Brake Support operates under certain low-speed conditions between about 2 and 18 mph. It is not a substitute for safe and attentive driving. Factors including movement and shape of the object in front of the vehicle, weather and road conditions can all impact automatic stopping. ¹⁰SiriusXM Satellite Radio reception requires a subscription and Mazda satellite radio. Subscriptions to SiriusXM services are sold by SiriusXM after a 4-month trial subscription to the SiriusXM All-Access package expires and are continuous until you call SiriusXM at 1-866-635-2349 to cancel. See SiriusXM Customer Agreement for complete terms at www.siriusxm.com. Sirius satellite service available only to those at least 18 and older in the 48 contiguous USA, D.C., and P.R. (with coverage limitations). Sirius, XM and all related marks and logos are trademarks of SiriusXM Radio Inc. ¹¹Smart Brake Support operates under certain conditions above 10 mph. It is not a substitute for safe and attentive driving. Factors including movement and shape of the object in front of the vehicle, weather and road conditions can all impact automatic brake control and collision warning. ¹²Not a substitute for safe and attentive driving. There are limitations to the range and detection of the systems. Please see your Owner's Manual for further details. ¹³Traffic Sign Recognition System is not a substitute for safe and attentive driving. Factors including weather and the condition of the traffic sign can all impact recognition or display of the sign. Always check the traffic signs visually while driving. There are limitations to the range and detection of the system. Please see your Owner's Manual for further details. ¹⁴EPA estimated mileage. Actual results will vary.

i-ACTIV AWD, SKYACTIV and i-ACTIVSENSE are registered trademarks of Mazda Motor Corporation. Driving Matters and Mazda Drive for Good are registered trademarks of Mazda Motor of America, Inc. iPhone is a registered trademark of Apple Inc. Android is a trademark of Google Inc. Bluetooth is a registered trademark of Bluetooth SIG, Inc. HomeLink is a registered trademark of Genetex Corporation. All other marks, logos, and product names are the property of Mazda Motor Corporation, its affiliates, or are the property of their respective owners.

SO MANY EXCITING WAYS TO SAY, "THIS ONE'S MINE."

We create every Mazda to be the best it can be. From there, it's up to you and your imagination. Outfitting your car with Genuine Mazda Accessories is all about making a statement and getting more out of your lifestyle. There are no wrong answers, only an array of exciting choices. You'll find the only thing better than getting a Mazda is when you make it YOUR Mazda. And when you choose Genuine Mazda Accessories, you have the comfort of knowing every accessory was designed exclusively for your model by our very own Mazda designers.

For a full list of Genuine Mazda Accessories for your Mazda6, please visit Accessories.mazdausa.com.



REAR SPOILER

There's nothing wrong with adding a little extra edge to your Mazda6. This race-inspired Rear Spoiler adds a bit of an exclamation point to your car's aerodynamic profile.



CARGO TRAY¹

This flexible, durable Cargo Tray protects against damage and spills by elevating your cargo on top of grooves designed to help divert and catch any messy liquids. Removes easily for quick cleanup.



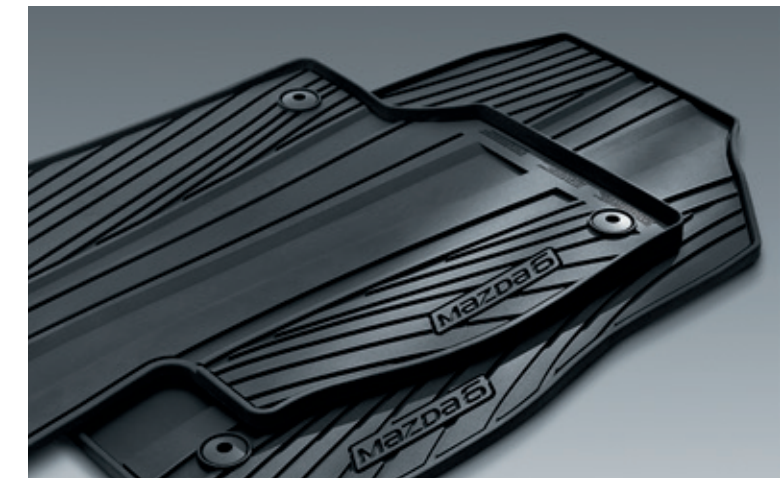
REAR BUMPER GUARD

Your rear bumper can take a beating loading and unloading camping gear, golf clubs, or hardware. Help protect it from chips and scratches with our durable stainless steel Rear Bumper Guard.



DOORSILL TRIM PLATES

These gleaming doorsills are a stylish calling card to both a welcome entry and graceful exit.



ALL-WEATHER FLOOR MATS

Protect your car from the elements, as well as spilled liquids and foods. Our specially fitted All-Weather Floor Mats are designed to hold a healthy amount of liquid, making spills easier to deal with.



NAVIGATION SYSTEM

This convenient system integrates with your car's display screen to offer advanced lane guidance, a 3D interactive map, and can be controlled with voice commands.



MAZDA MOBILE START²

Did you lock your car or not? Know for sure with the convenience of our smartphone-controlled Mazda Mobile Start app. Lock or unlock your doors, start the engine, turn on the rear defroster or use the Carfinder function from just about anywhere. One-year subscription included. Visit MazdaMobileStart.com.

¹Please remember to properly secure all cargo. ²One-year subscription included. Continuation is \$65 per year. App available on iPhone® and Android™ phones for specified Mazda vehicles with automatic transmission. Check www.MazdaMobileStart.com for compatibility. Not compatible with all phones and carriers. Message and data rates may apply. iPhone is a registered trademark of Apple Inc. Android is a trademark of Google Inc.



DRIVING MATTERS MOST WHEN YOU'RE DRIVING FOR GOOD.

To Mazda, there's only one thing that means as much as driving: giving back.

The Mazda Drive for Good® Event is our annual charitable program that allows us to give back to those in need. But we don't do this alone. For every purchase of a Mazda, drivers like you have helped us raise millions of dollars for both national and local charities. But what's even more significant is that for every test drive taken during the event, we pledge one hour of community service to local worthy causes across the country. And to date, we've pledged more than 72,000 hours of volunteer time to those who need it most. All thanks to people like you who simply took a test drive.

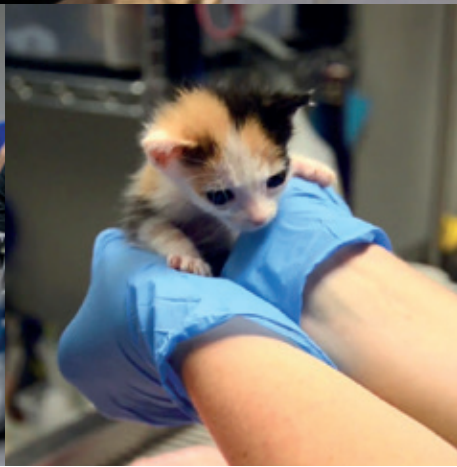
Our Mazda Dealers have a long history of giving back both time and money to their communities. And their efforts truly define our Mazda values. Mazda Drive for Good is just one of the many charitable programs that has allowed Mazda to donate to worthy causes across the United States since 1992.

Because we believe giving back matters.



WE KNOW YOUR FIRST IMPRESSION OF MAZDA STARTS WITH US, YOUR MAZDA DEALER.

It's a responsibility we don't take lightly. It's why we work hard every day to make sure your customer service experience exceeds your expectations, in every way. From the factory to your first test drive and to every drive you'll ever make in a Mazda, we're here because Driving Matters.





MazdaUSA.com



© 2016 Mazda Motor of America, Inc. • 7755 Irvine Center Drive, Irvine CA 92618 • (800) 639-1000 • Correct at time of printing • Printed in U.S.A. 8/16 (50K)
Part no. 17M6HYP

PRODUCT CHANGES AND OPTIONS AVAILABILITY: Following publication of this brochure, certain changes in standard equipment, options, prices and the like—or product delays—may have occurred that would not be included in these pages. Your Mazda Dealer is your best source for up-to-date information. Mazda reserves the right to change product specifications at any time without incurring obligations. Options shown or described in this brochure are available at extra cost and may be offered only in combination with other options or subject to additional ordering requirements or limitations.